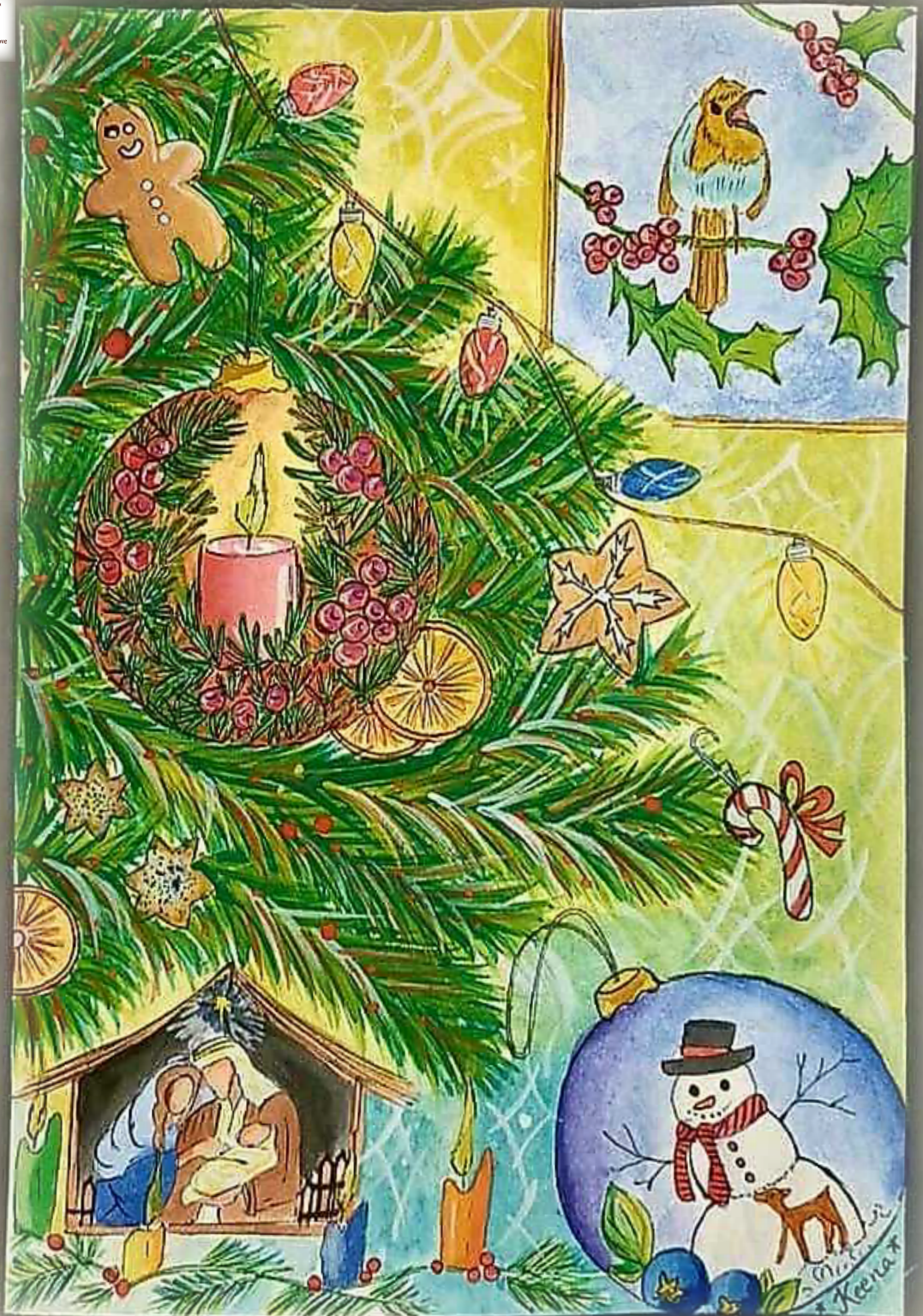




GOA JESUIT  
PROVINCE  
Building Human Communities of Love





***The  
Goa Jesuits  
Wish you  
A Blessed Christmas  
&  
A Meaningful New Year  
2024***



Christ became flesh and dwelt among us  
inviting us to walk together and  
embrace our differences.

Like the Holy Family, let's keep  
our hearts open  
to talking, understanding,  
and working together

Fostering peace and harmony for all.

In this holy season,  
let's value every voice,

And build human communities based on  
justice, peace, and love.

This Christmas let us allow Christ's  
light to shine through us.



The drawing incorporate various Christmas symbols, each carrying a specific meaning. For instance, the Christmas tree symbolizes Jesus Christ's birth and resurrection. The white snow represents God's forgiveness of our sins. The candy cane symbolizes the staff used by the shepherd in caring for the sheep, and its stripes remind us of Jesus' suffering. The manger is a significant symbol, indicating that Jesus is sustenance for us. The lights symbolize Jesus' role as the Light of the World and how he came to save people from darkness. As for the candles, they represent the Star of Bethlehem that guided the Magi to the manger where baby Jesus was born, or they signify that

**JESUS IS THE LIGHT OF THE WORLD.**



**Front Cover**  
**KEENA ELEORA CABRAL**  
*Loyola Higher Secondary, Margao*